

INSTALLATION INSTRUCTION

EQUIPMENT REQUIRED:

WIRING ACCESS LOCATION: SUV1, SUV2

DRILL BITS:

HITCH REQUIRES 1/2" PIN AND CLIP

WRENCHES: (TIGHTEN ALL FASTENERS WITH TORQUE WRENCH) 14mm, 18mm, 19mm

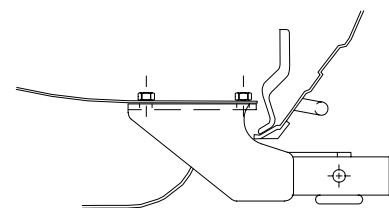
VEHICLE

HITCH NO.

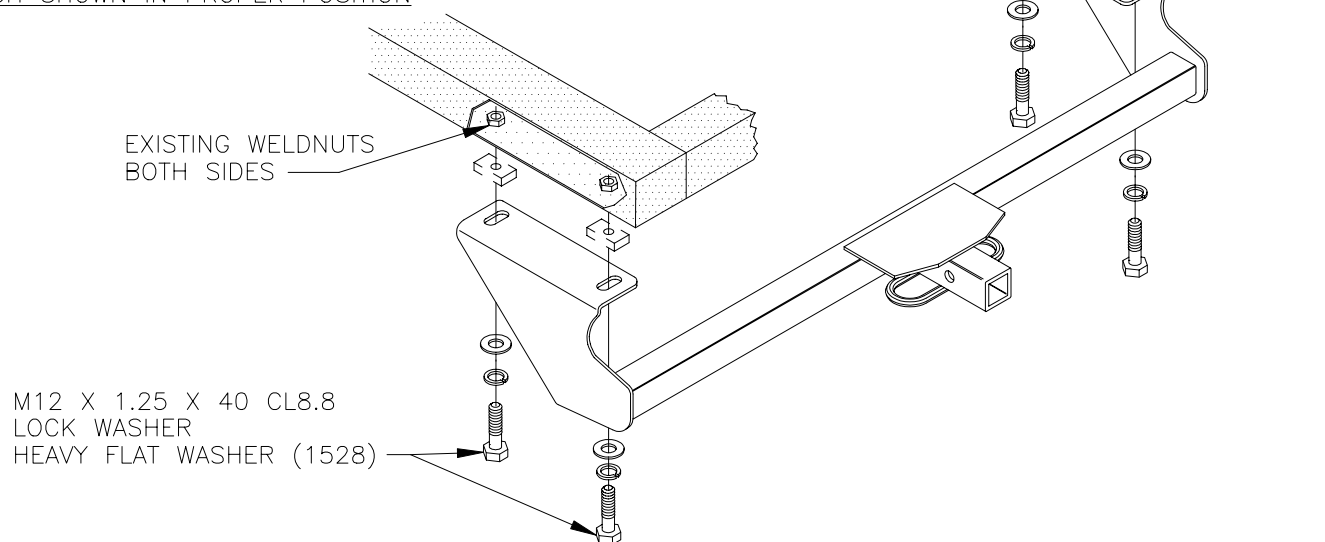
SEO TRACKER
SUZUKI SIDEKICK & X90
(EXCLUDING SPORT)

24622
77015
60862

2000 LB MAX GROSS TRAILER WT
200 LB MAX TONGUE WEIGHT
DO NOT EXCEED TOWING VEHICLE RATINGS

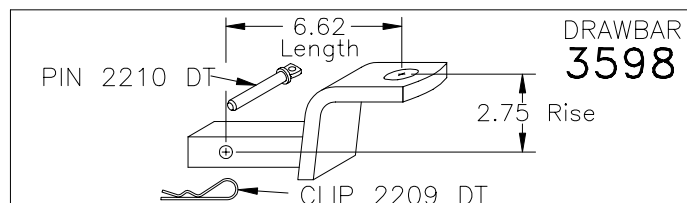


HITCH SHOWN IN PROPER POSITION



1. IF PRESENT, REMOVE REAR IMPACT BAR FROM VEHICLE FRAME, TWO (2) BOLTS PER SIDE. RETURN IMPACT BAR AND BOLTS TO VEHICLE OWNER FOR REPLACEMENT IF HITCH IS REMOVED.
2. REMOVE FASTENERS FROM HITCH, NUTS PROVIDED ARE USED FOR SHIPPING ONLY AND MAY BE DISCARDED.
3. POSITION HITCH ON VEHICLE AND INSTALL FASTENERS PROVIDED AS SHOWN.

NOTE: FOR SUZUKI X90 APPLICATIONS, PLACE 7/16 X 1 X 2 BLOCK (1080-012, 4 PLACES) BETWEEN HITCH AND FRAME TO CLEAR TOW HOOK ON PASSENGER SIDE. BLOCKS ARE NOT PROVIDED. TIGHTEN M12 CL 8.8 BOLTS TO 68 LB.-FT.



USE ONLY THE DRAWBAR SHOWN FOR CORRECT BUMPER CLEARANCE AND HEIGHT.
DRAWBAR MUST BE USED IN THE RISE POSITION ONLY.

THIS PRODUCT COMPLIES WITH SAFETY SPECIFICATIONS AND REQUIREMENTS FOR CONNECTING DEVICES AND TOWING SYSTEMS OF THE STATE OF NEW YORK AND V.E.S.C. REGULATION V-5.

APPROX WEIGHT (LB.)

FASTENER KIT

15.5

01130-942

NOTE: Check hitch frequently, making sure all fasteners and ball are properly tightened. If hitch is removed, plug all holes in trunk pan or other body panels to prevent entry of water and exhaust fumes. A hitch or ball which has been damaged should be removed and replaced. Observe safety precautions when working beneath a vehicle and wear eye protection. Follow car maker's specs for maximum trailer weight and tongue weight. Do not cut access or attachment holes with a torch.

TOWING PRODUCTS