

INSTALLATION INSTRUCTIONS: APEX MODULAR PACK RACK



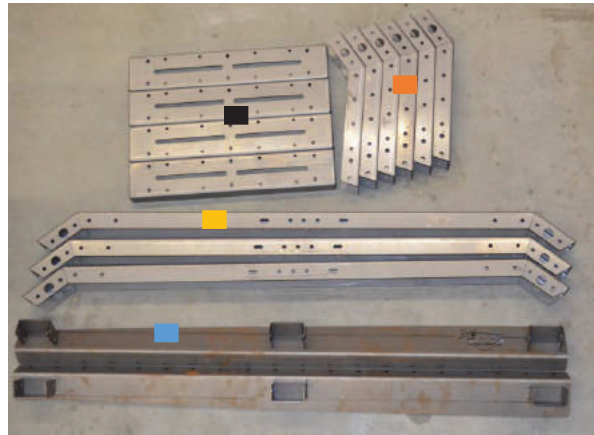
INSTALLATION TIME: Approx. 1 hour

REQUIRED TOOLS: 2 x 9/16 Wrench or Ratchet

Various Hex Keys

INCLUDED COMPONENTS:

- 2 x Bed Rail with Welded Saddles
- 6 x Vertical Bar
- 3 x Horizontal Bar
- 4 x Accessory Cross Bar



INCLUDED HARDWARE:

- 48 x 3/8" x 1" Button Head
- 64 x 3/8" Flat Washer
- 64 x 3/8" Lock Washer
- 64 x 3/8" Nut
- 16 x 3/8" x 1" Hex Head
- 4 x Bed Rail Inserts
- 8 x 5/16" x 1" Button Head



Note: *Hardware may vary depending on model.*

AP-305837

PROCESS:

- 1.) Account for all assembly components and hardware. Gather required tools.
- 2.) Locate and remove two (one driver side and one passenger side) rear stock plastic bedrail clips.



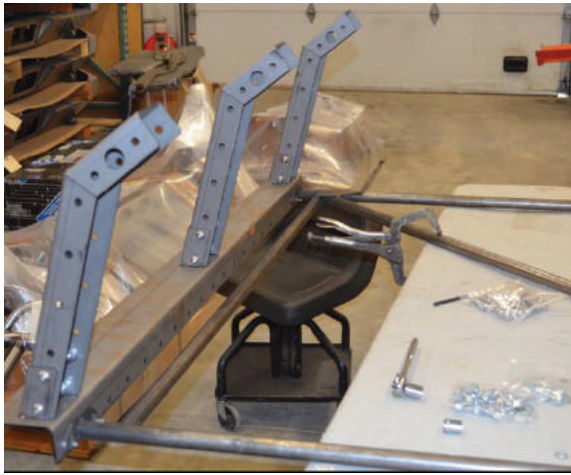
- 3.) Insert bed rail mounting bracket into stock bedrail slides. Position brackets so that one is near the ca and one is near the tailgate side of the stock bed rail tracks.



- 4.) Mount bed rail to track system using the bed rail inserts and 5/16" button head bolts.



- 5.) Mount vertical bars into the bed rail saddles using 4 3/8" button heads, 4 flat washers, 4 lock washers, and 4 nuts. Make sure to leave everything loose throughout assembly, tighten only once everything is fitted properly.



- 6.) Place horizontal cross bars on top of vertical bars and bolt them using 8 3/8" Button heads per cross bar.



- 7.) Next, mount accessory cross bars using the 3/8" hex head bolts . AllPro recommends two accessory crossbars between the two rear hoops, and two down the middle in between the horizontal cross bars.



- 8.) After all components are installed, tighten everything down to finalize the installation.

