



## INSTALLATION INSTRUCTIONS: 2016+ TACOMA FRONT TUBE BUMPER



**INSTALLATION DIFFICULTY:** MEDIUM (FRIEND RECOMMENDED)

**APPROX. TIME:** 2-3 HOURS

**REQUIRED TOOLS:** 10mm, 14mm, 17mm, 19mm Sockets and Wrenches and Ratchet  
Phillips Head and Flat Head Screw Driver  
Cut Off Wheel or Small Hand saw capable of cutting  
plastics

**INCLUDED HARDWARE:** 11 x ¼-20 button head cap screws  
11 x ¼" Flat washer and lock washer  
11 x ¼" Nut  
2 x ½" Bolt and Nut

**INCLUDED COMPONENTS:**

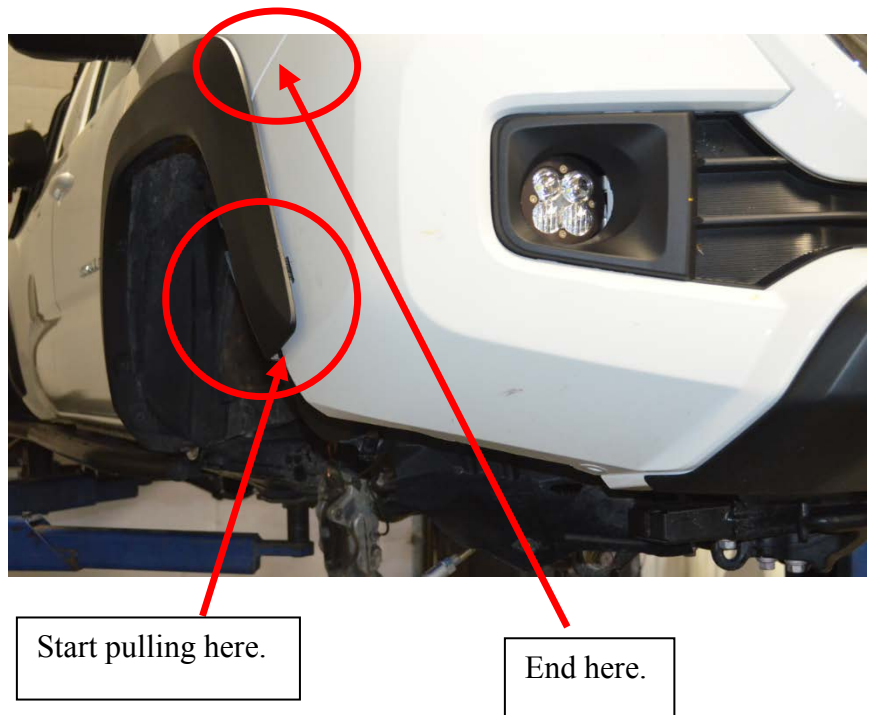
1 x All-Pro Off Road 2016+ Tacoma Tube Front Bumper  
2 x Power Steering Cooler Relocation Tabs



**AP-305809**

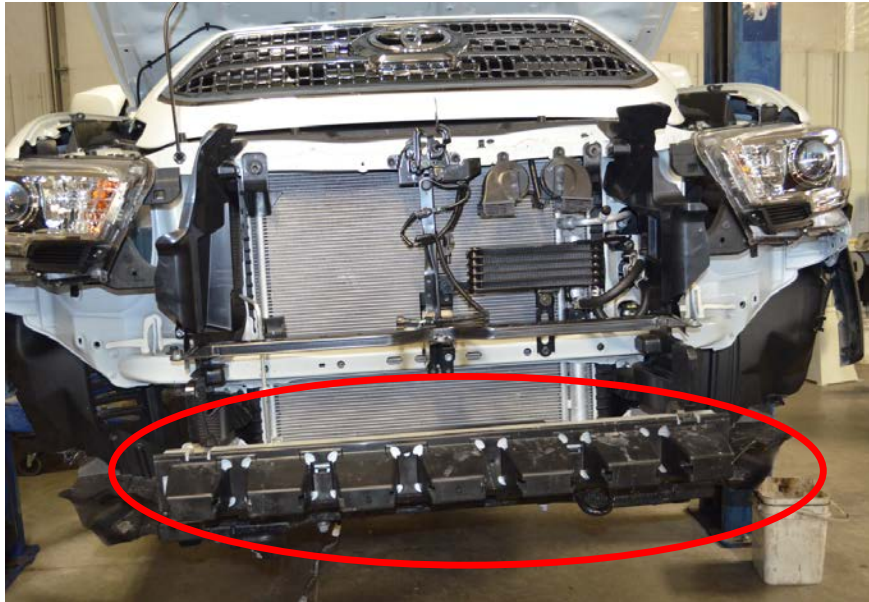
**PROCESS:**

- 1.) Account for all assembly items, gather tools.
- 2.) Begin removal of OE bumper. Using a 10mm socket and ratchet, remove the 6 bolts (8 in some models) that hold on the fender flare. There are 2 bolts that are hidden inside the flare lining in the wheel well. In the bottom of the flare lining, there is one pop pin per side, remove this as well. Once all bolts are removed, starting from the front of flare, slowly and carefully pull it back until you reach the line of the bumper meeting the body of the vehicle.

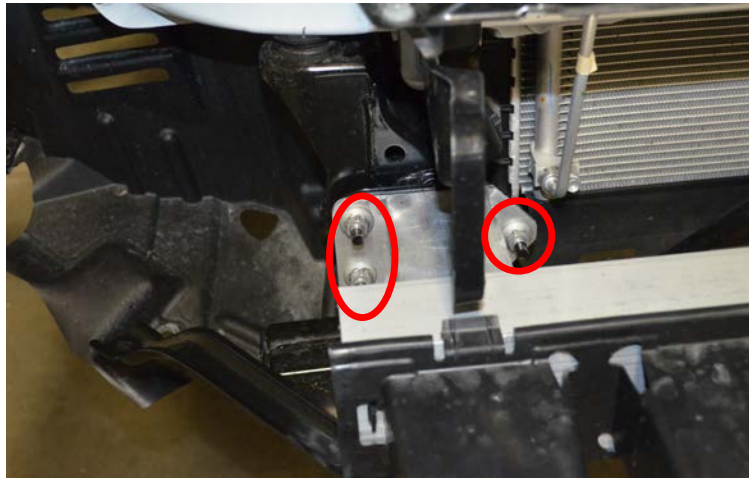


- 3.) Next, remove the lower valance using a 10mm socket on the 13 bolts.
- 4.) Using a 10mm socket, remove the 2 bolts and then 2 pins on the top of the grill to remove it from the truck. Pull grill of carefully starting from the bottom and working upward. Place grill aside until it is reinstalled later.
- 5.) Once the grill is removed, remove the 6 pushpins from the top of the bumper.

- 6.) Remove the lower bumper cover. To do so, start pulling from the outside wings of the bumper near the wheel wells. Pull carefully, but it does take some force to disconnect the clips. Disconnect the fog lights from their wiring harness.



- 7.) Set bumper cover aside for now as it will have to be trimmed later.  
 8.) Remove stock inner push bar shown above in the red circle by removing the 3 bolts per side using the 14 mm socket. There is no need to remove the black plastic blocks as this part will not be used later. Set the nuts aside as they will be used to mount the new bumper.



- 9.) Using the provided template, carefully cut the bumper skin in order to fit with the new All-Pro tube bumper.





**10.)** Unbolt the passenger and driver side body mounts using a 14mm socket in preparation for mounting the bumper. The bumper has tabs that will slide over the top face of the body mount and the body mount bolt will fit through it.



**11.)** Remove end caps on lower cross member under radiator as well as stock tow hook.



**12.)** Using the supplied relocation tabs, relocate the two brackets connected to the power steering cooler line back towards the radiator. Once the brackets have been relocated, it may be necessary to bend the brackets upwards a little to clear the bolt head and prevent the steering cooler line from rubbing on anything.



- 13.) If a winch is to be installed, do this now as per the winch manufacturer's instructions.
- 14.) Lift bumper into place ensuring that the 6 studs in the stock frame horns go through the six slotted holes in the bumper mounting plates. Also ensure that the body mount tabs are seated correctly on top of the body mount bracket.



- 15.) Replace body mount bolt and rubber pads along with the six stock nuts removed from the frame ends in step 8.
- 16.) Ensure that the bumper is aligned properly and level across the top, once this is achieved, torque all six frame mounting bolts down and the two body mount bolts. Insert the provided 1/2" bolt through the bottom of the frame cross member through the mounting plate on the bottom of the bumper.
- 17.) Bolt the aluminum bash plates to the bumper with the provided 11 1/4-20 button head bolts and nuts.