

All-Pro Weld-On Lower Control Arm Cam Tab Gusset Kit




Important notices:

These instructions are intended only as a general guide for installing All-Pro products. For some items, specialized mechanical skills, metal fabrication and/or welding skills may be needed for proper installation. If you have any doubts or questions about installing these or other parts please call us at the shop 951-658-7077 or contact a competent mechanic, fabricator, welder or other appropriate professional.

Aftermarket accessories are intended to modify and/or prepare a vehicle for uses that exceed conditions anticipated by the vehicle manufacturer. These uses may include high performance demands and negotiation of rough terrain. These conditions have extreme variance and cannot be controlled by the vehicle manufacturer or aftermarket accessory manufacturer, therefore, the safe control of your vehicle is entirely your responsibility. Do not purchase parts from All-Pro Off Road unless you are willing to accept this responsibility. Do not install any All-Pro part that you do not feel competent at installing without causing present or future injury to yourself or others; consult a professional installer.

All parts sold by All-Pro Off Road are for off road racing use only and are not intended for use on the street. Modification of your vehicle to enhance performance with the parts sold by All-Pro Off Road can result in dangerous situations that may result in bodily harm. The buyer hereby assumes all risks associated with any such modifications. All-Pro Off Road will not accept responsibility for personal injury or property damage arising from the failure of any parts manufactured or sold by All-Pro Off Road.

In an effort to provide both durability and safety, All Pro Off Road recommends you carefully read the entire installation procedure before beginning, then rigidly follow these instructions during installation. Also, it is extremely important that you abide by proper safety procedures including the use of jack stands, setting the parking brake, wearing eye protection, etc.

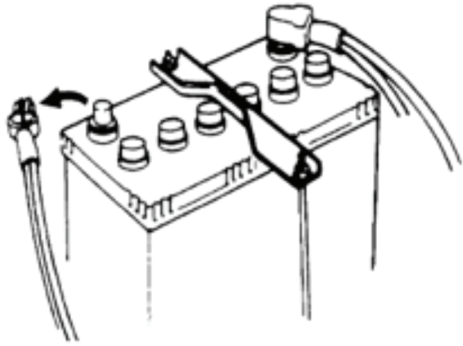
	NOTICE Read instructions completely before installing this product. Refer back to the instructions frequently during installation.		CAUTION Flying Object Hazard. Fluid Splash Hazard. Wear safety glasses at all times when working on vehicle.
 WARNING: Cancer and Reproductive Harm - www.P65Warnings.ca.gov			

AP-305652

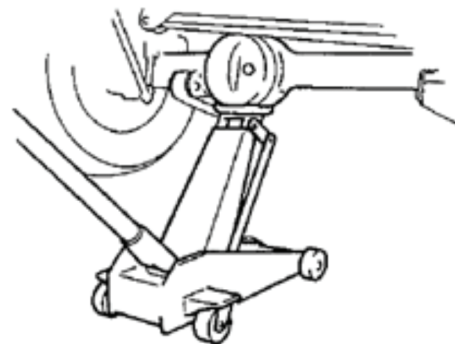
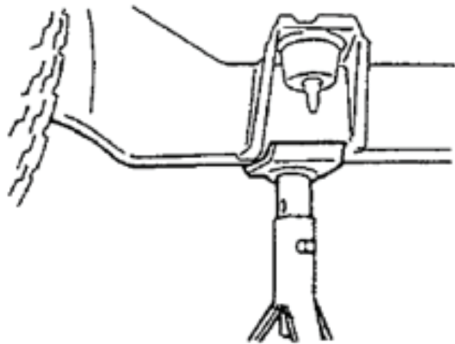
Installation Instructions:

Note: This installation is typical for most 1995-2004 Toyota Tacoma trucks.
Other models may vary. If necessary, refer to the proper Toyota Factory Service Manual for the year and model of your truck.

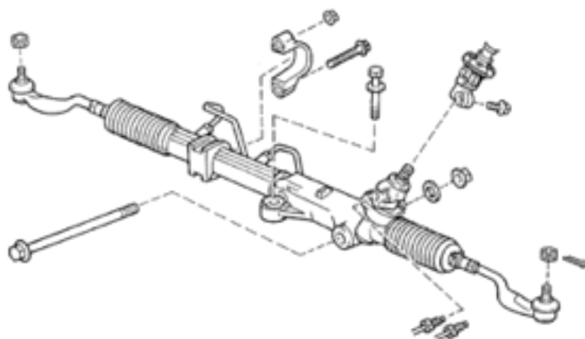
1. Open the hood and disconnect the negative (-) terminal from the battery.



2. Lift up the front end of the vehicle with a floor jack and place jack stands under the front end on both sides of the frame. Repeat for the rear end of the vehicle.



3. Unbolt & remove the steering rack.



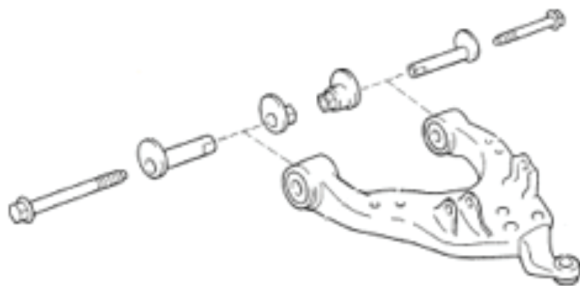
4. Using a paint pen, place marks on the alignment cams & frame.



5. Disconnect the sway bar link, lower ball joint, & lower strut from the lower A-arm.



6. Unbolt and remove the lower A-arms from the frame.



7. Using a drill, drill out the (3) spot welds on the front stock alignment cam tabs. Using a chisel, carefully remove the stock alignment cam tab bracket from the frame. Repeat for the (3) remaining front stock alignment cam tabs.



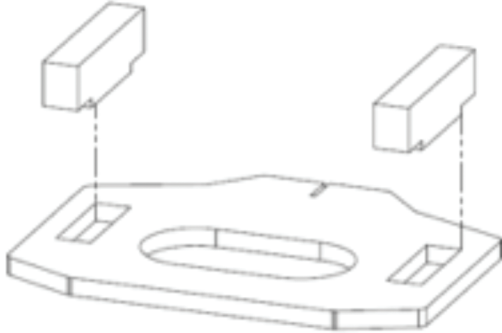
8. Using a cutting wheel, cut the welds on the rear stock alignment cam tabs. Using a chisel, carefully remove the stock alignment cam tabs from the frame. Repeat for the (3) remaining rear stock alignment cam tabs.



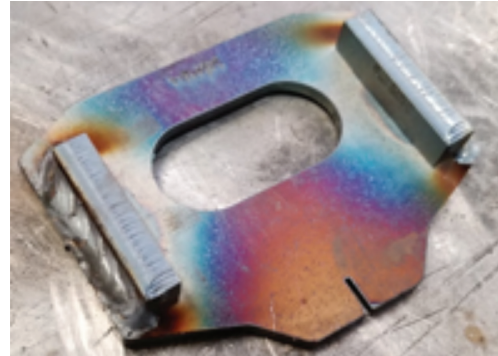
9. Using an angle grinder, grind the surface of the frame down to bare metal. The surface should be flat and free of paint.



10. Install the tabs into the LCA gussets. You may have to gently tap them into the bracket with a hammer.



11. Weld the outer edges of the tabs.



12. Flip the bracket over and plug weld the tabs to the bracket.



13. Grind the welds on the backside flush with the gusset using an angle grinder. Repeat Steps 10-12 for the remaining gussets.



14. Align the slots onto the gussets with the slots on the frame. Tack weld the gussets to the frame.



15. Make sure the cam bolts and cams rotate freely in the slots and between the gusset tabs.

16. Remove the cam bolts and cams. Weld the gussets into place. Paint the gussets and any exposed metal on the frame.



17. Reinstall the A-arms, cams, and cam bolts. Make sure to realign the marks on the cam with the marks made on the frame in Step 4. Torque the cam bolts to 96 ft-lbs (130 N-m).

18. Repeat Steps 1-5 in reverse order. Check that all fasteners are torqued properly. Take the vehicle for a short test drive.

